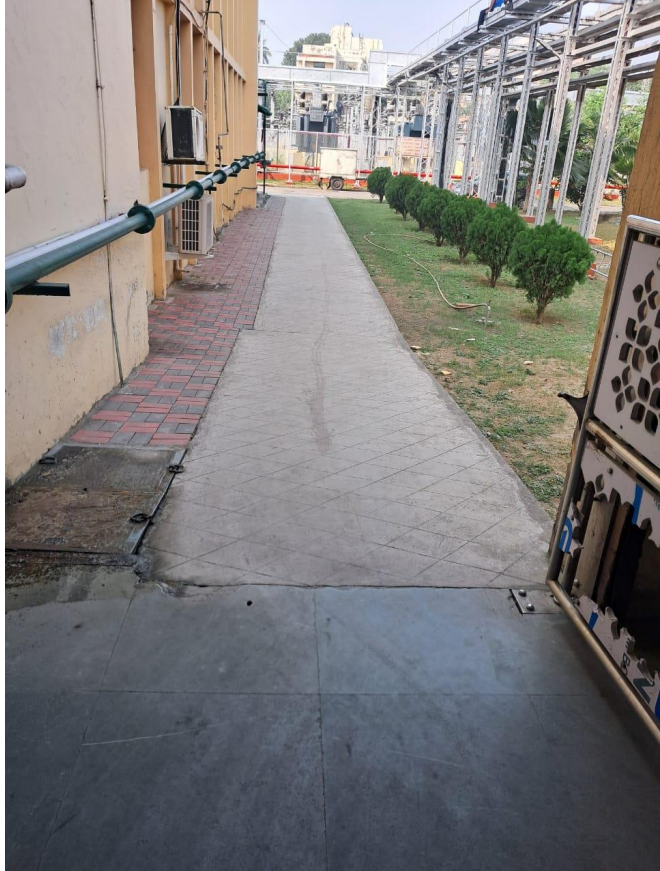


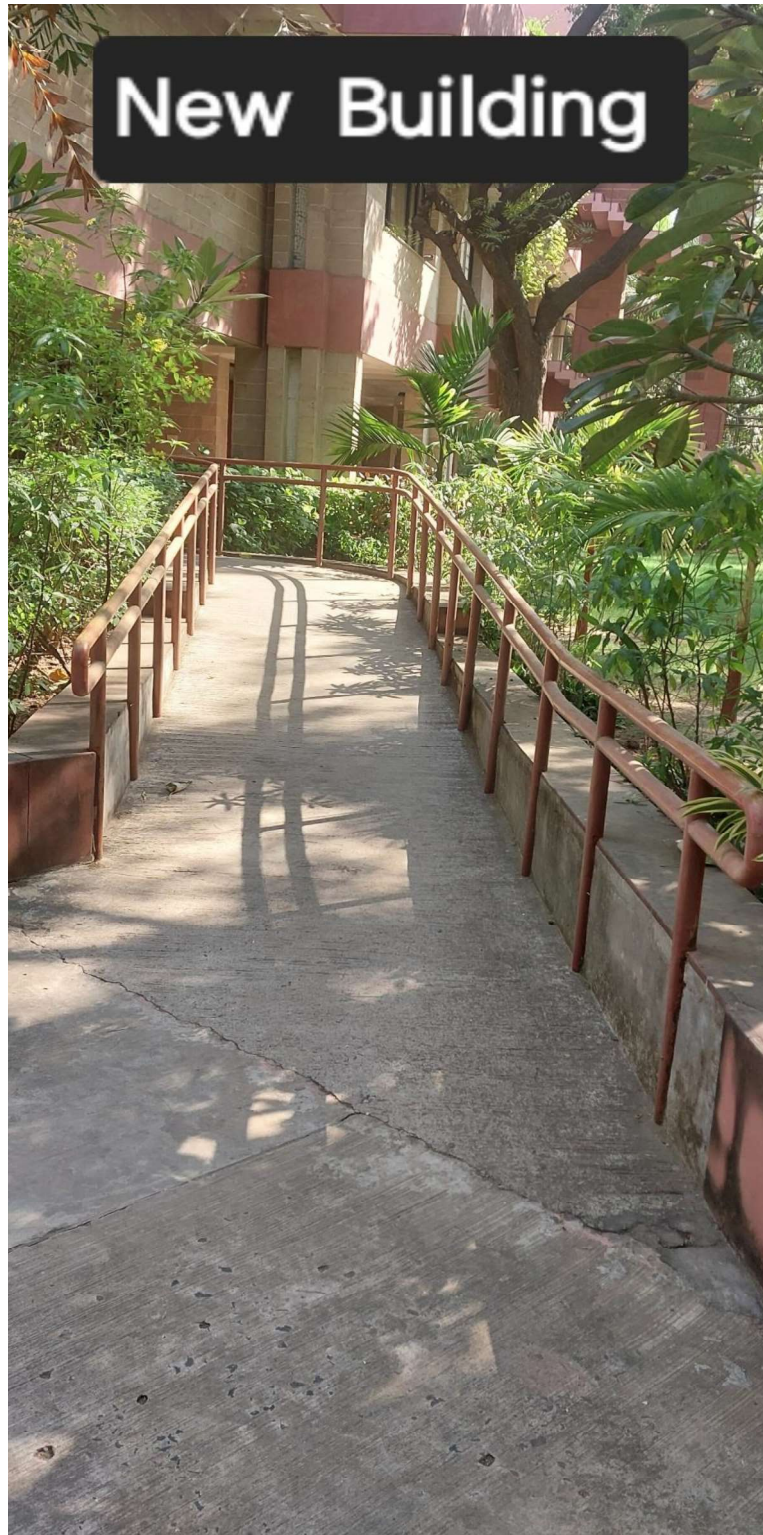
HBNI

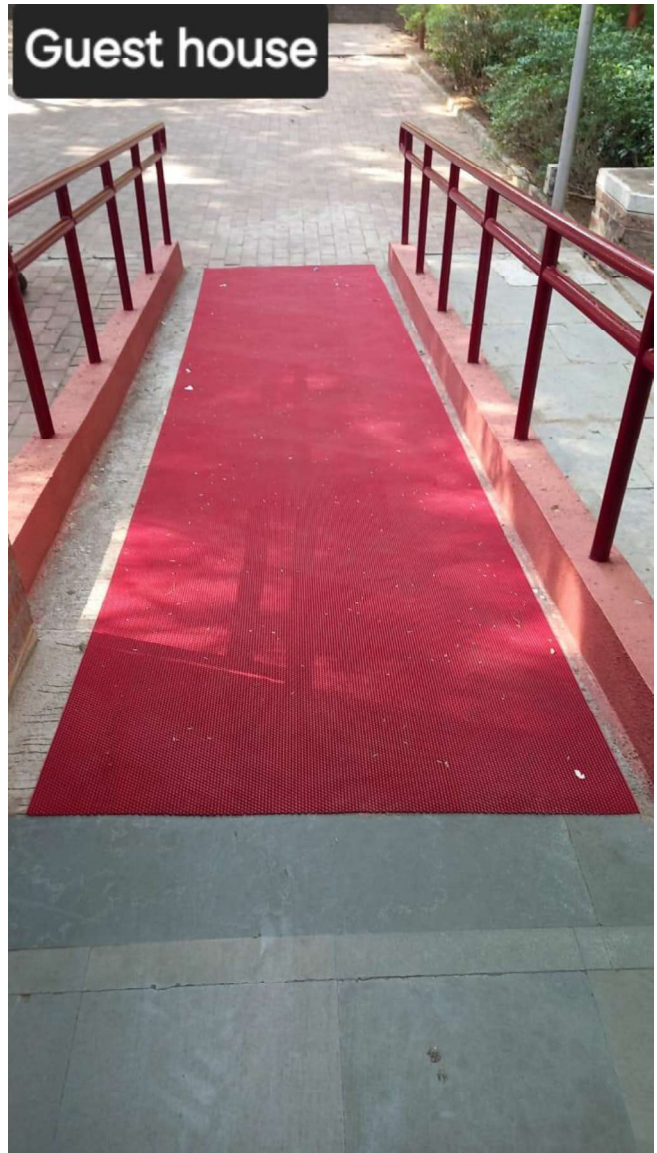
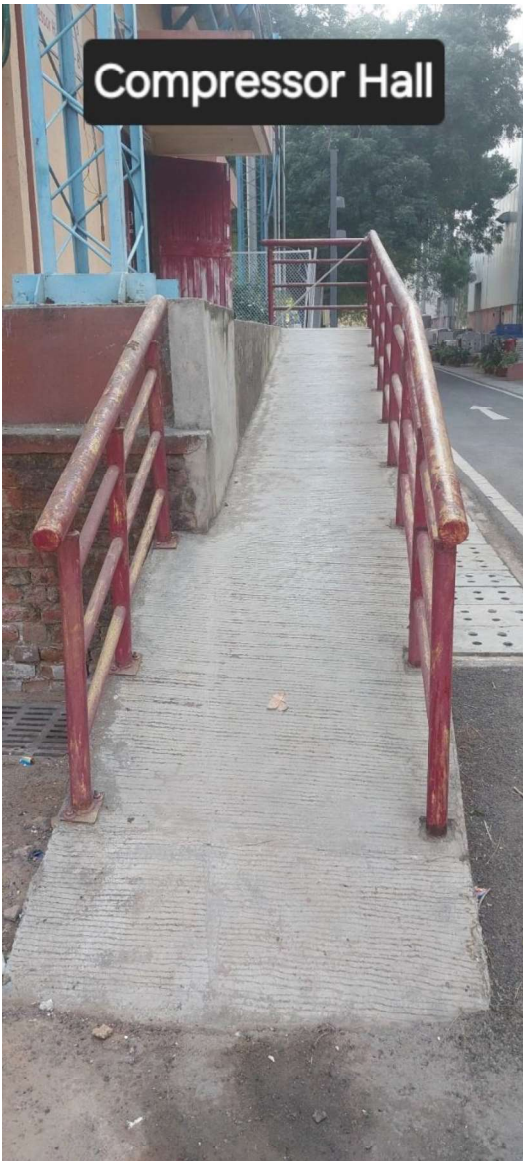
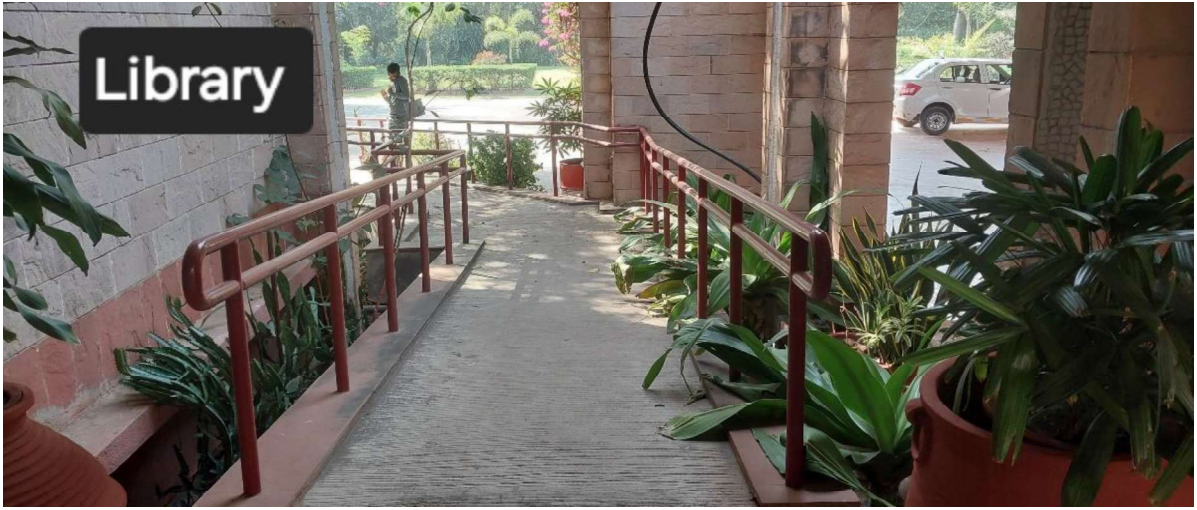


VECC



1. **ST/SC Committee:** Kindly refer annexure-1
2. **Women's Cell Committee:** Kindly refer annexure-2
3. **Sports Committee:** There is no such committee as Sports Committee in IPR. .
4. **Barrier-Free Environment** (The institution has a disabled-friendly and barrier-free environment, with ramps/lifts for easy access to classrooms and centres) photographs





**New R&D**

EXHIBITION HALL

E-9  
E-8

